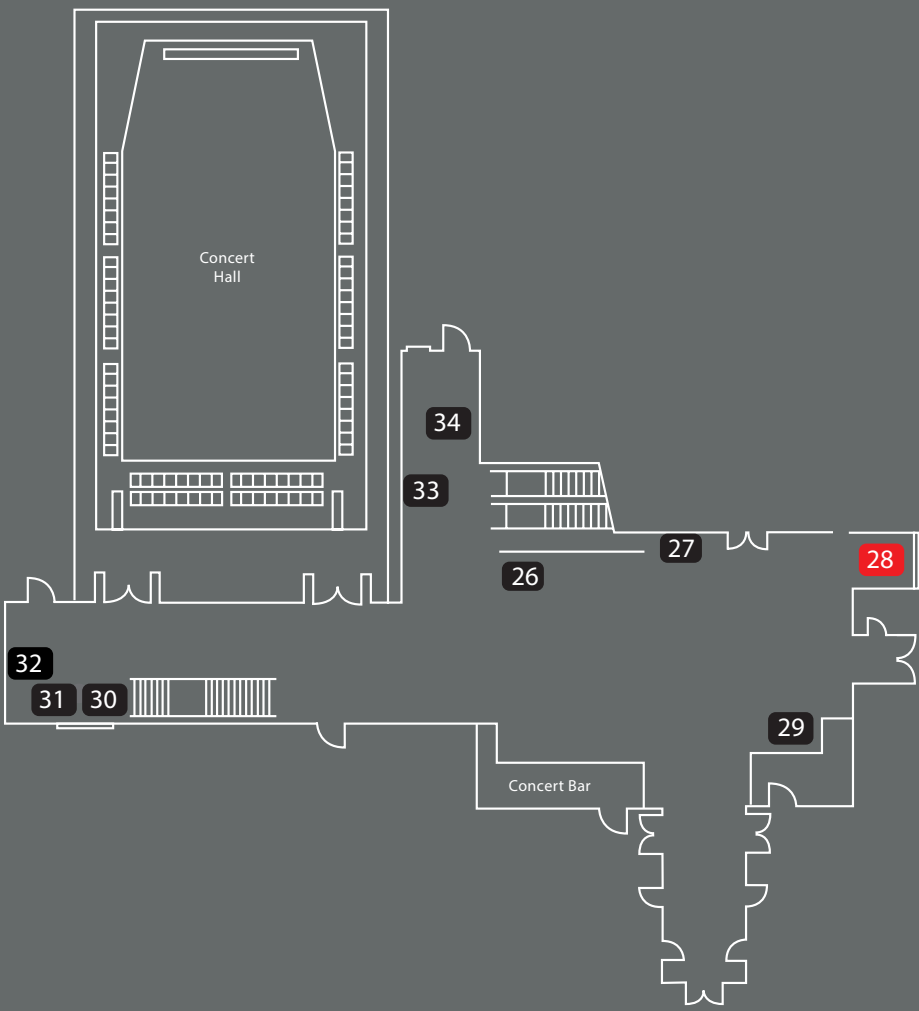
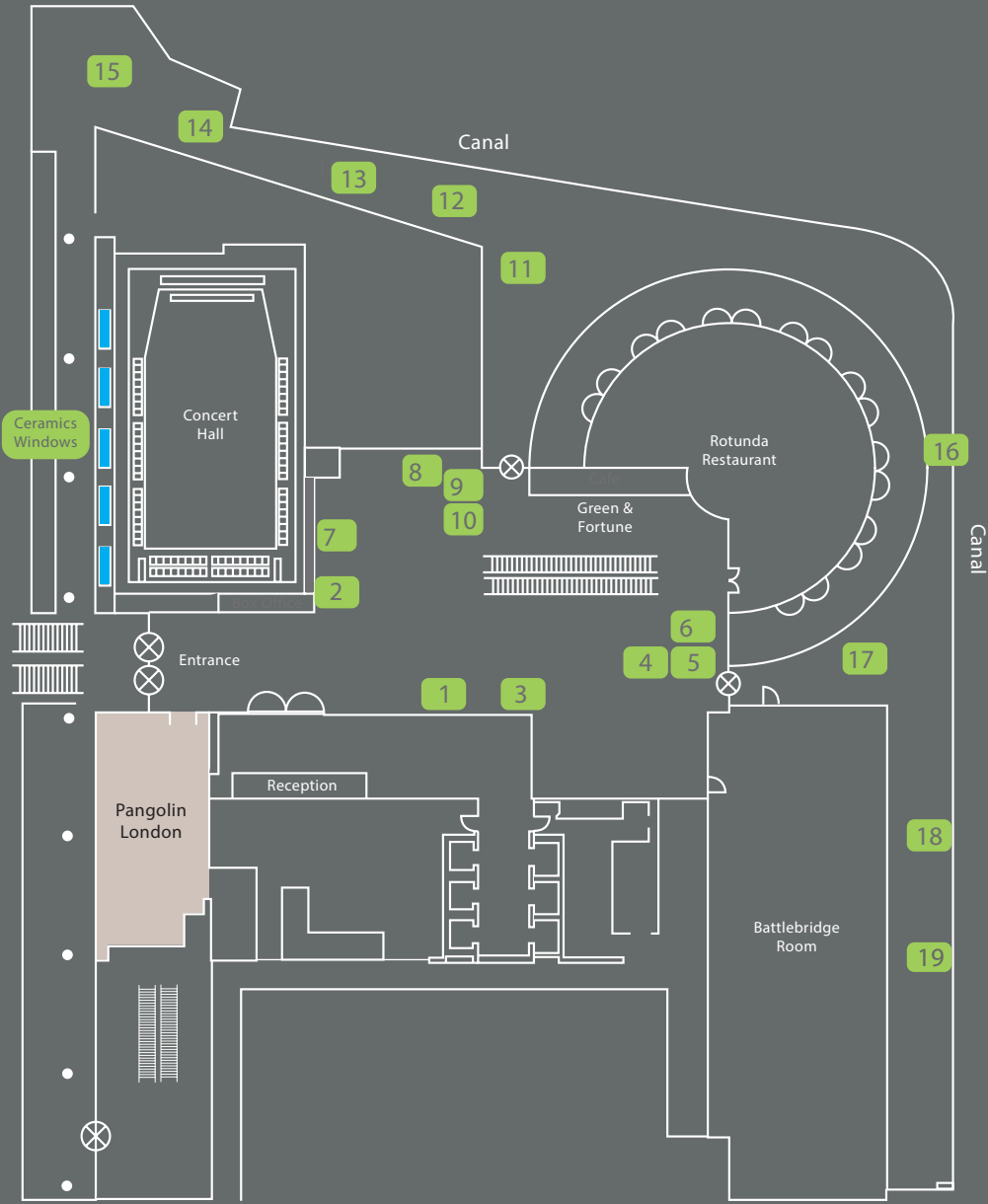


Ground Level

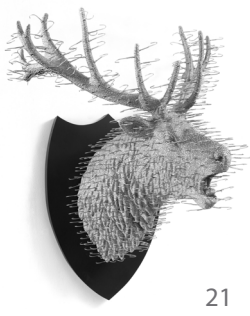
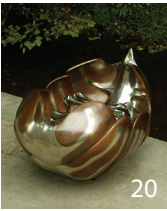
Lower Level -2



- Key
- Ground Level Sculptures
  - Level -2 Sculptures
  - Pangolin London
  - Ceramics Windows
  - Spotlight Artists

Sculpture Trail Map

Sculptures



- 1** Lynn Chadwick  
*Stairs*  
1991, Bronze  
Edition of 9
- 2** William Tucker  
*Subject & Shadow II*  
1962-2017, Steel and  
jesmonite  
Edition of 3
- 3** William Tucker RA  
*Subject & Shadow*  
1962-2017,  
Aluminium &  
Fibreglass  
Edition of 3
- 4** Charlotte Mayer  
*Luna*  
2008, Bronze  
Edition of 8
- 5** Lisa Traxler  
*Outer Space*  
2023, Ink on paper  
Edition of 20
- 6** Lisa Traxler  
*Twin*  
2023, Ink on paper  
Edition of 20
- 7** Jon Buck  
*Fooling Around*  
2022, Birchwood  
relief  
Unique
- 8** Ann Christopher  
*The Edge of Light*  
2002, Bronze  
Edition of 5
- 9** Lisa Traxler  
*Transformation 3*  
2023, Ink on paper  
Edition of 30
- 10** Lisa Traxler  
*Transformation 5*  
2023, Ink on paper  
Edition of 30
- 11** Charlotte Mayer  
*Turning*  
2015, Bronze  
Edition of 5
- 12** Geoffrey Clarke  
*Post Inert Phase II*  
*Disc*  
1986, Aluminium  
Edition of 6
- 13** Charlotte Mayer  
*Voyager*  
1994, Bronze  
Edition of 8
- 14** David Mach  
*Darlington Train*  
*Maquette*  
1997-2020  
Bronze
- 15** Jon Buck  
*Ark: High & Dry*  
2017, Bronze  
Edition of 3
- 16** Bruce Beasley  
*Thrust*  
1993, Bronze  
Edition of 9
- 17** Terence Coventry  
*Boar II*  
1999, Bronze  
Edition of 5
- 18** Terence Coventry  
*Monumental Gannet*  
*Head*  
2010, Bronze  
Edition of 5
- 19** Terence Coventry  
*Torso II*  
2016, Bronze  
Edition of 10
- 20** Steve Dilworth  
*Ark*  
2000, Bronze & Silver  
Nickle  
Unique
- 21** David Mach RA  
*Silver Hart*  
2016, Coat-hangers  
Edition of 4
- 22** Angela Palmer  
*The Last Frontier*  
2021, Engraved Glass  
Unique
- 23** Charlotte Mayer  
*Largo*  
2020, Bronze  
Edition of 9
- 24** Lisa Traxler  
*Selected sculptures*
- 25** David Mach  
*Temple At Tyre*  
1994-2020, Bronze  
Edition of 5
- 26** Lisa Traxler  
*Descendants*  
2020, Hand painted  
vitreous enamel  
on steel, wood  
composite surround  
Unique
- 27** Jon Buck  
*All the Running You*  
*Can Do*  
2022, Birchwood  
relief  
Unique
- 28** Julie Brook  
*Firestack, Winter*  
2016, Photographic  
print on aluminium  
Edition of 7



This exhibition celebrates fifteen years of Pangolin London championing modern and contemporary sculpture and is testament to the incredible talent of our artists.

**FIFTEEN: An Anniversary Exhibition**  
(In the gallery and in Kings Place, B-1 Level)  
26 September - 4 November

**Exhibitions**

Pangolin London's Sculpture Trail includes large scale works by a host of artists, both within the building and canalside at Kings Place, and is fast developing a reputation as one of the UK's most dynamic Sculpture Trails. Please contact Pangolin London for further details and sales enquiries.

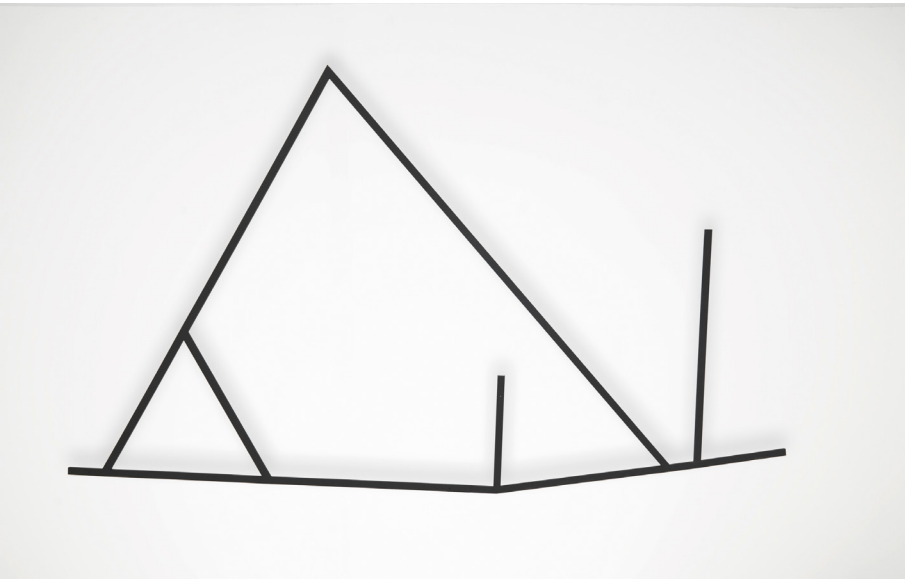
Pangolin London is one of London's few galleries dedicated to exhibiting sculpture.

**About**

# KINGS PLACE SCULPTURE TRAIL

2023

# PANGOLIN LONDON



All works are available for sale.  
Please contact the gallery for more information on 020 7520 1480  
or email [gallery@pangolinlondon.com](mailto:gallery@pangolinlondon.com).  
Follow us on Instagram: @pangolin.london  
Facebook: Pangolin London  
Twitter: PangolinLondon

*Fifteen* showcases the diverse range of sculptural practices that have evolved over the past eight decades from the powerful post war sculptures of Lynn Chadwick and Geoffrey Clarke to cutting edge contemporary workssuch as *Human Error* by Zachary Eastwood-Bloom made using AI technology and traditional blown glass or Susie MacMurray's *Medusa* which took over a year to hand-make in copper chainmail.

Over the past fifteen years the gallery has focused on exhibitions that explore both the historical progression of British sculpture alongside important solo exhibitions and have published over sixty insightful catalogues dedicated to the subject.



Pangolin London  
Kings Place  
90 York Way  
London N1 9AG  
📍 Kings Cross

Kings Place Building Opening Hours  
Mon - Fri 8am - 10pm  
Sat, Sun 10am - 10pm  
Pangolin London Opening Hours  
Monday to Saturday  
10am - 6pm

Telephone (0)20 7520 1480  
[gallery@pangolinlondon.com](mailto:gallery@pangolinlondon.com)  
[www.pangolinlondon.com](http://www.pangolinlondon.com)

© All Content and Images  
Copyright Pangolin London 2022