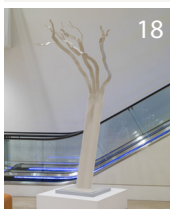
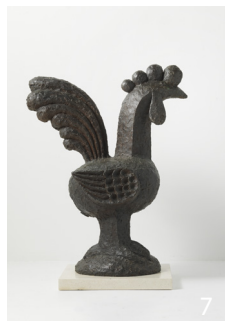
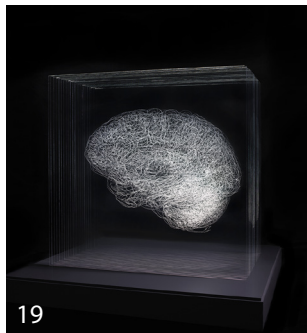


Key

- Ground Level Sculptures
- Level -2 Sculptures
- Pangolin London
- Window Gallery

Sculpture Trail Map

Sculptures



1
Lynn Chadwick
Stairs
1991, Bronze
Edition of 9

2
Charlotte Mayer
The Thornflower
2006, Bronze and stainless steel
Edition of 12

3
Geoffrey Clarke
Pilgrim
2001
Mixed media
Unique

4
Jon Buck
Headland
2009, Bronze
Edition of 10

5
David Mach
Temple at Tyre
1994-2020
Bronze

6
Ann Christopher
The Edge of Light
2002, Bronze
Edition of 5

7
Breon O'Casey
Large Cockerel
2009, Bronze
Edition of 3

8
Terence Coventry
Boar II
1999, Bronze
Edition of 5

9
Terence Coventry
Monumental Gannet Head
2010, Bronze
Edition of 5

10
Terence Coventry
Torso II
2016, Bronze
Edition of 10

11
Lynn Chadwick
Sitting Couple (C93)
1989, Bronze
Edition of 9

12
Steven Gregory
Me & My Friends
2005, Bronze
Unique

13
Heather Jansch
Madrugada
2014, Bronze
Edition of 5

14
Geoffrey Clarke
Post Inert Phase II Disc
1986, Aluminium
Edition of 6

15
Charlotte Mayer
Voyager
1994, Bronze
Edition of 8

16
David Mach
Darlington Train Maquette
1997-2020
Bronze

17
Jon Buck
Ark: High and Dry
2017, Bronze
Edition 1 of 3

18
Almuth Tebbenhoff
White Tree
2007-2025, Steel
Unique

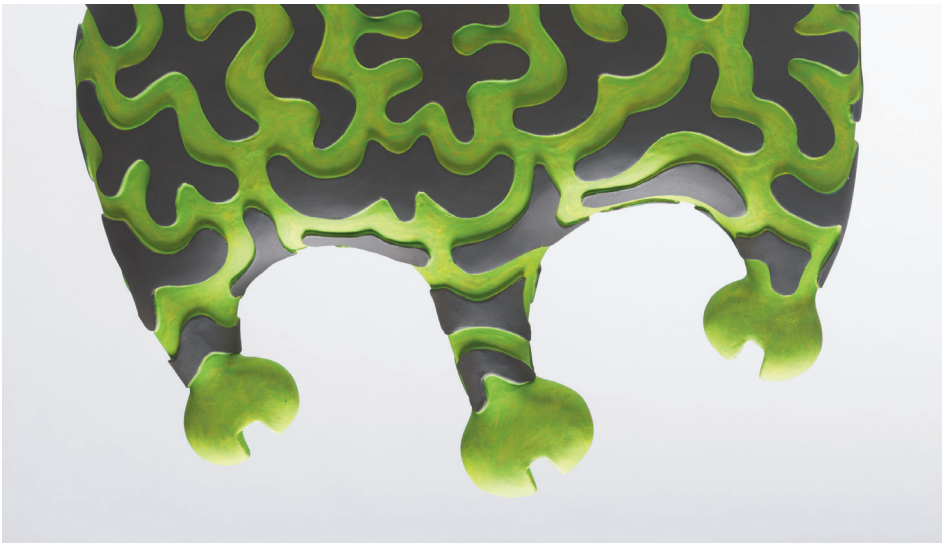
19
Angela Palmer
The Last Frontier
2021, Engraved Glass
Unique

20
Almuth Tebbenhoff
White Mountain
1997, Steel
Unique

21
Almuth Tebbenhoff
Petrified I
1994-2003, Painted Steel
Unique

22
Jon Buck
All the Running You Can Do
2022, Birchwood relief
Unique

23
Julie Brook
Firestack, Winter
2016, Photographic print on aluminium
Edition of 7



A solo exhibition by the ever-inventive sculptor Jon Buck. Charting forty years of his career, this exhibition intertwines Buck's early explorations in sculpture with his most recent works. Through his distinctive use of humour, colour, pattern, and form, Buck delves into profound universal themes - what it means to be human, our connection to nature, and the cultural narratives that both shape and define us.

15 January - April 2025

Jon Buck: Telltale Forms (in the Gallery)

Exhibitions

Pangolin London's Sculpture Trail includes large scale works by a host of artists, both within the building and canalside at Kings Place, and its fast developing reputation as one of the UK's most dynamic Sculpture Trails. Please contact Pangolin London for further details and sales enquiries.

Pangolin London is one of London's few galleries dedicated to exhibiting sculpture.

About

KINGS PLACE SCULPTURE TRAIL

2025

PANGOLIN LONDON



This exhibition coincides with the launch of a monograph on Almuth Tebbenhoff published by Unicorn Publishing, available at the gallery.

A solo exhibition by the multi-disciplinary artist Almuth Tebbenhoff, revealing her ongoing investigation into the transformative possibilities of sculptural materials. From ceramic and steel to marble and paper, the works on display will unfold a sensitive, intelligent search for meaning and purpose in both the natural world and the broader universe.

5 July - 31 December 2025

(B-1 and Window Gallery)

Almuth Tebbenhoff: Facets

Exhibitions



Find us...

Free Admission

Pangolin London
Kings Place
90 York Way
London N1 9AG
📍 Kings Cross

Kings Place Building Opening Hours
Mon - Fri 8am - 10pm
Sat, Sun 10am - 10pm
Pangolin London Opening Hours
Mon - Tue By Appointment Only
Wed - Sat 10am - 6pm

Telephone (0)20 7520 1480
gallery@pangolinlondon.com
www.pangolinlondon.com

© All Content and Images
Copyright Pangolin London 2025

All works are available for sale.
Please contact the gallery for more information on 020 7520 1480
or email gallery@pangolinlondon.com.
Follow us on Instagram: @pangolin.london
Facebook: Pangolin London
LinkedIn: Pangolin London