



MERETE RASMUSSEN

EXPANSION

PANGOLIN LONDON



Expanding Orange
2022, Ceramic with coloured slip
Unique
44 x 47 x 26 cm

FOREWORD

It is a glorious Spring day in April when I drive to East Sussex to visit Merete Rasmussen. The hedge rows are acidic green with fresh new leaves, the roadsides thriving with delicate wild flowers and the chatter of birds. Looking out from Rasmussen's beautifully designed studio to the lush garden which she and her family have transformed since leaving London, over the valley to the undulating hills beyond, one cannot fail to recognise the importance of nature to her work. Perhaps striving to recreate the haven she recalls enjoying during her childhood in Sweden, Rasmussen has surrounded herself with nature, both outdoors and in, with her impressive collection of succulents and sedum, whose extraordinary range of leaf shapes often find a resonance with the folds and forms Rasmussen creates in her work.

One has to have patience for transformation, and it is always inspiring to see how Rasmussen's care and attention transforms intractable, heavy stoneware clay into creations so full of dynamic lightness. First sketching out a rough small maquette in clay to help her follow the form, Rasmussen spends weeks building up and paring back her flowing organic forms, taking particular care and pleasure when she is able to take the piece as a whole and work on the edges to finish off the piece. With each work taking three firings there are occasional casualties, but as any ceramicist learns, this is a painful part of the job.

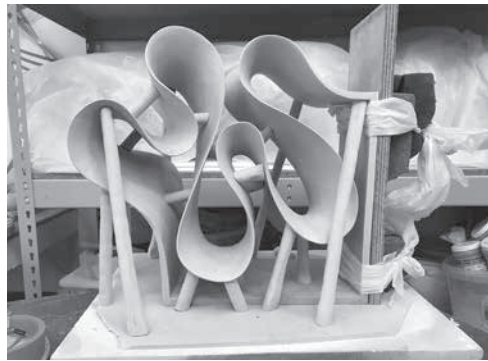
Lying flat on the large working table is an exquisite new wall piece in an unusual pale blue ceramic slip titled *Sinuous Blue*. Its complex arrangement of twists and furls immediately spring to life as Rasmussen holds it up against the wall. In each of the artist's exhibitions, she seems to relish tackling a challenge - not content to stand still - and this extraordinary creation takes her single piece wall works to a new level.

Another exciting new departure is a group of works which for the first time raise Rasmussen's flowing forms within a continuous yet contrasting formal structure. It is a remarkable combination, which at once allows the intricate twisted element to lift from the plinth and take the eye on a journey of both movement and formalism. *Expanding Orange*, *Emergent Yellow* and *Blue Progression* all allude to ideas of expanding the physical space in a formal sense but also to the energetic emergence of nature, whereas *Thriving Blue* suggests taking over an internal space and the compression it undergoes as the form expands.

Another material that Rasmussen has mastered is wax, developing her striking and instantly recognisable forms and imbuing them with a subtle and sensuous surface texture, which translates perfectly into cast metal. Since her last exhibition in 2019, she has refined her technique, not only to be able to work at scale, but also to almost impossible thinness to create unique jewellery that is cast directly into sterling silver. *Endure*, a powerful, large new bronze, is patinated a rich turquoise and will be able to go outdoors (unlike its ceramic siblings), and it will be thrilling to see it respond to natural surroundings, emerging and enduring in the natural environment that first inspired it.

As I drive back from the studio, the vibrant colours and dynamic forms of Merete Rasmussen's ceramics continue to pulsate in my mind's eye. I am inspired by her quiet determination to push the boundaries of her media and patiently tease out its transformation, and am once again reminded how lucky we are to be witnesses. This exhibition marks a pivotal moment in Rasmussen's work, which I hope will be as thrilling for those new to her ceramics and bronzes as it has been for those of us fortunate enough to watch the expansion of her *oeuvre*.

POLLY BIELECKA



(RIGHT)
Yellow Continuous Form
2021, Ceramic with coloured slip
Unique
32.5 x 42 x 45 cm

(FAR LEFT)
Expanding Orange in progress (details p. 3)

(LEFT)
Rasmussen working in her studio



The background is an abstract composition of overlapping teal and blue circular shapes, creating a sense of depth and movement. In the upper right corner, a blurred image of a cityscape with buildings and a bridge is visible through the translucent shapes.

CATALOGUE



Endure
2022, Bronze
Edition of 3
85 x 120 x 65 cm



Joyous Red
2022, Ceramic with coloured slip
Unique
48 x 70 x 70 cm





Emergent Yellow
2022, Ceramic with coloured slip
Unique
39 x 47 x 35 cm

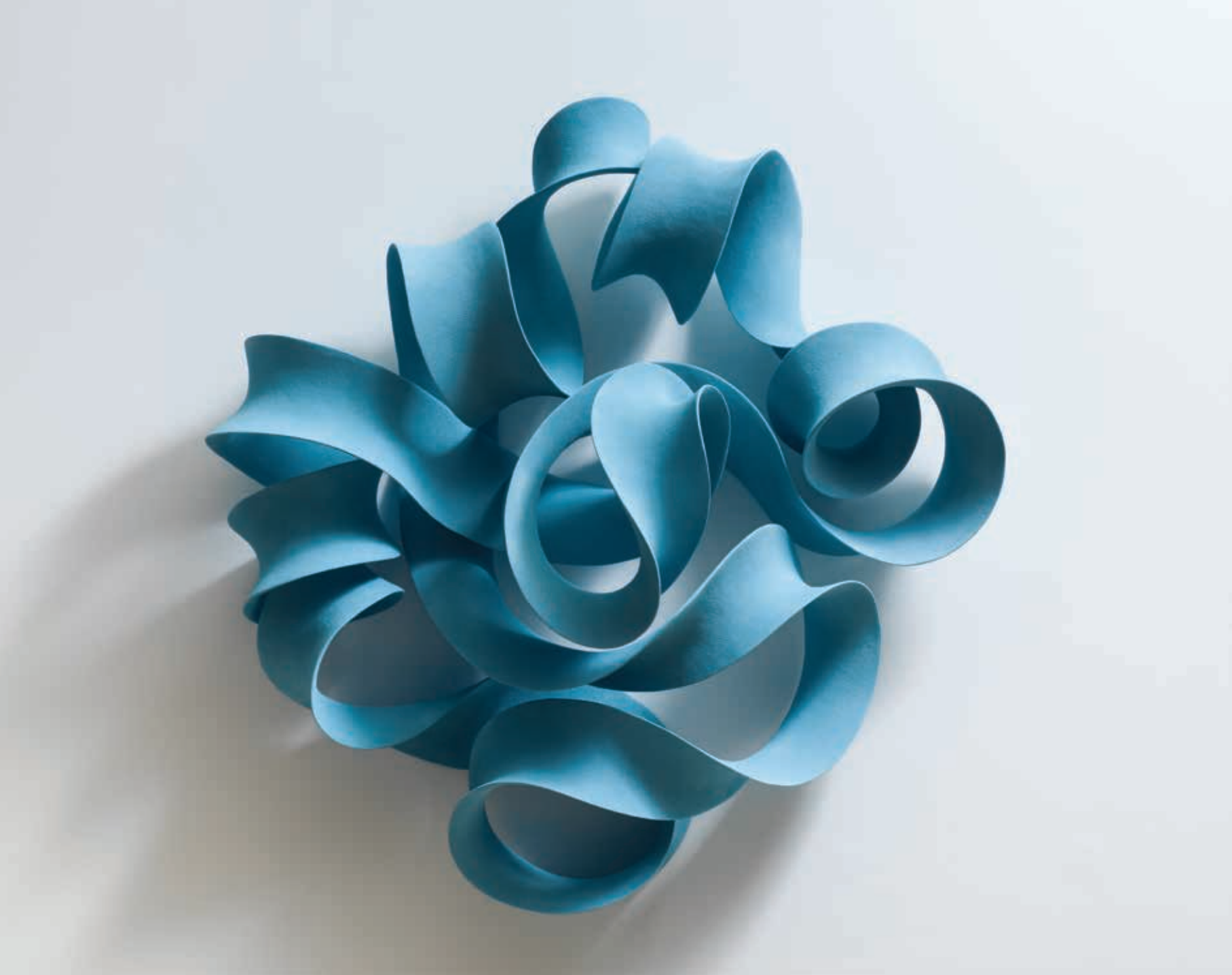




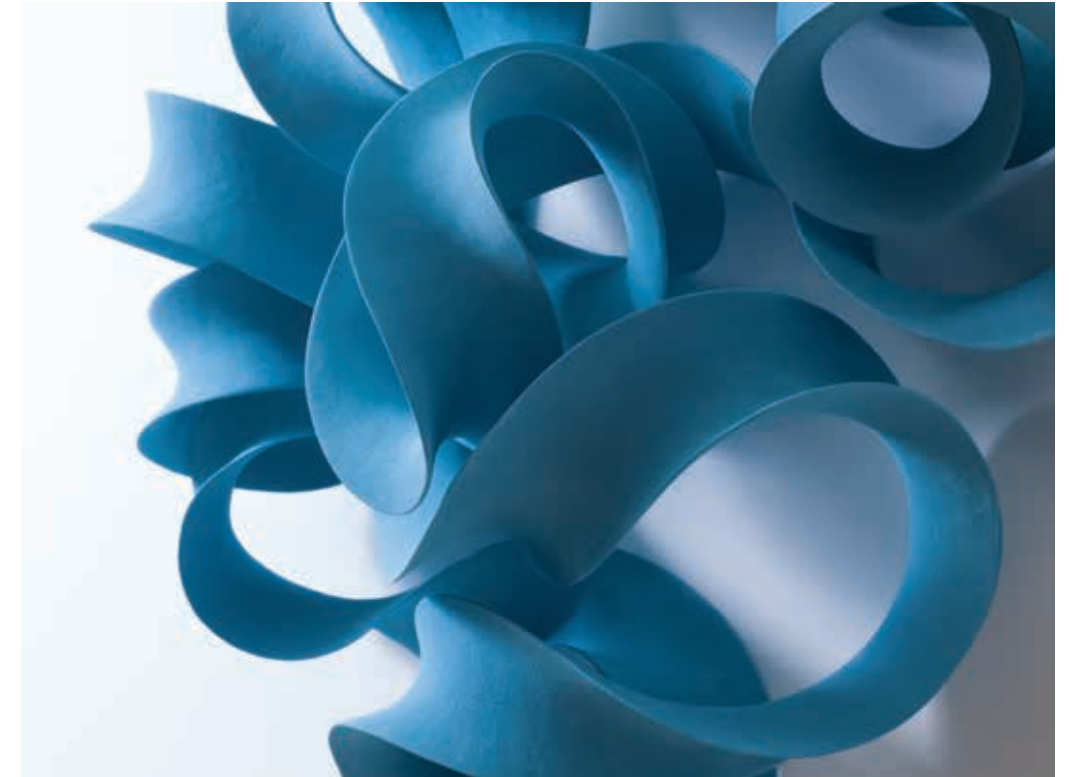
Ever Flowing
2022, Bronze
Unique
10 x 16 x 13 cm

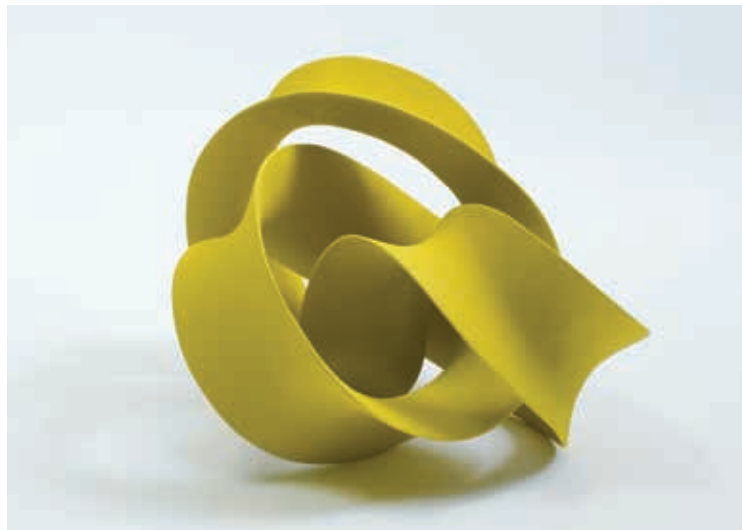






Sinuous Blue (Wall piece)
2022, Ceramic with coloured slip
Unique
85 x 87 x 34 cm





Coiled Yellow Green
2022, Ceramic with coloured slip
Unique
25 x 31 x 25 cm





Meandrous
2022, Ceramic with coloured slip
Unique
41 x 70 x 42 cm





Ceaseless Red
2021, Ceramic with coloured slip
Unique
30 x 54 x 49 cm



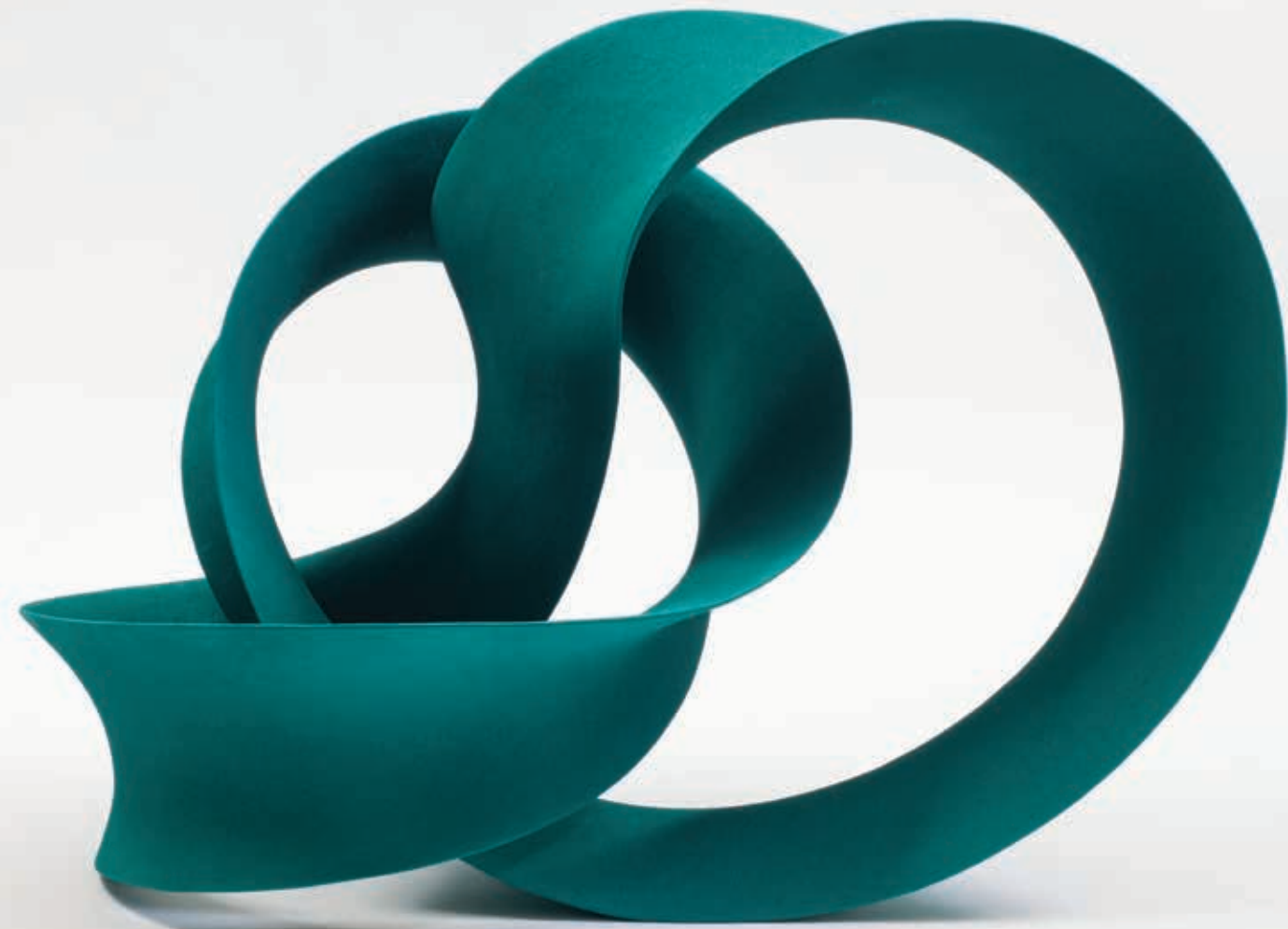


Quadruple Twisted Yellow
2021, Ceramic with coloured slip
Unique
46 x 68 x 57 cm





Continual Form
2022, Ceramic with coloured slip
Unique
41 x 58 x 30 cm



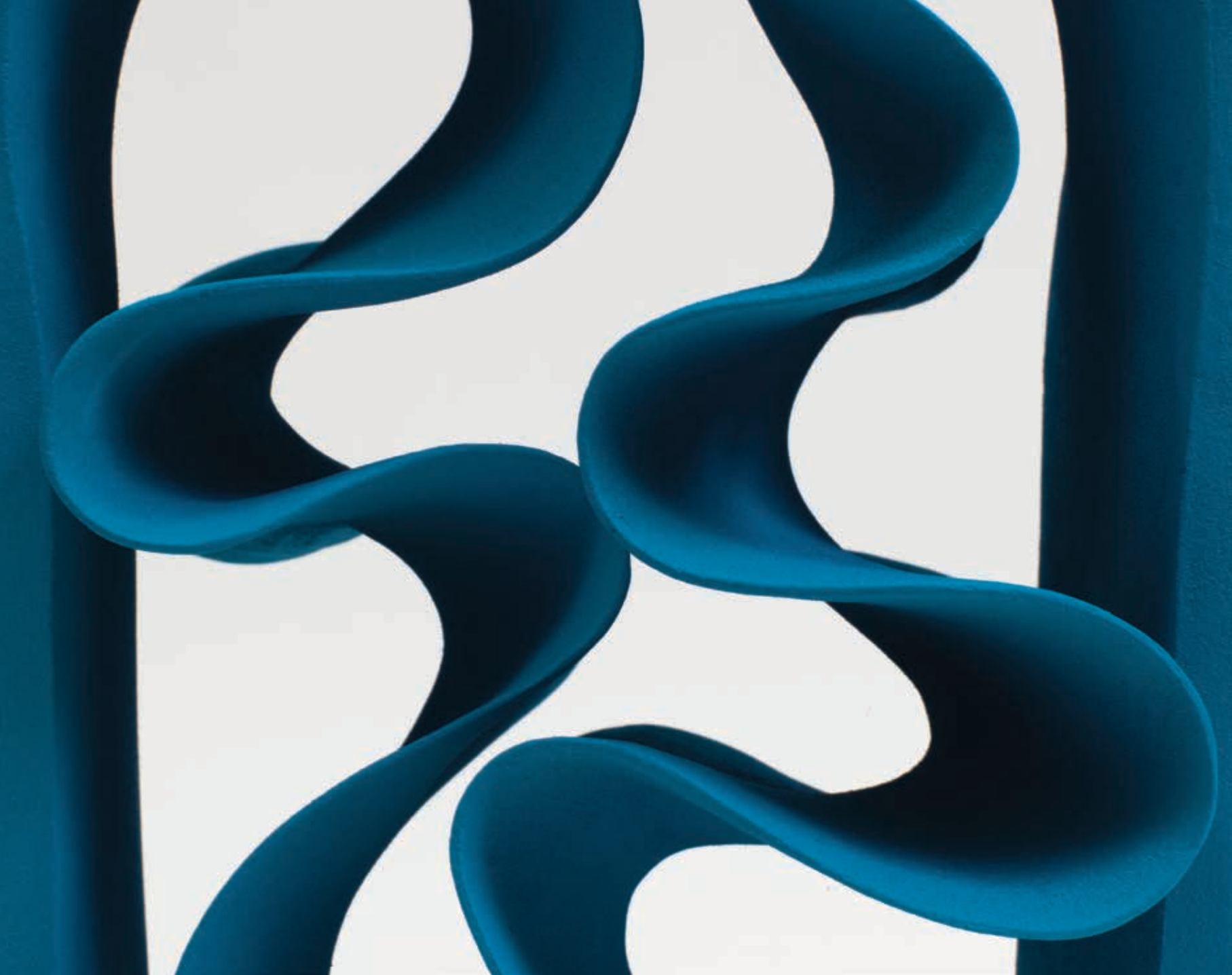


Expanding Orange
2022, Ceramic with coloured slip
Unique
44 x 47 x 26 cm



Impulse
2022, Bronze
Unique
30 x 15 x 12 cm





Thriving Blue
2022, Ceramic with coloured slip
Unique
46 x 26 x 22 cm





Propel
2021, Ceramic with coloured slip
Unique
47 x 47 x 38 cm







Electric Blue Form (Wall piece)
2021, Ceramic with coloured slip
Unique
51 x 36 x 24 cm



Limitless
2022, Bronze
Unique
34 x 14 x 14 cm





Flowing Orange (Wall piece)
2021, Ceramic with coloured slip
Unique
60 x 46 x 19 cm



Endless Orange
2021, Ceramic with coloured slip
Unique
21 x 47 x 37 cm

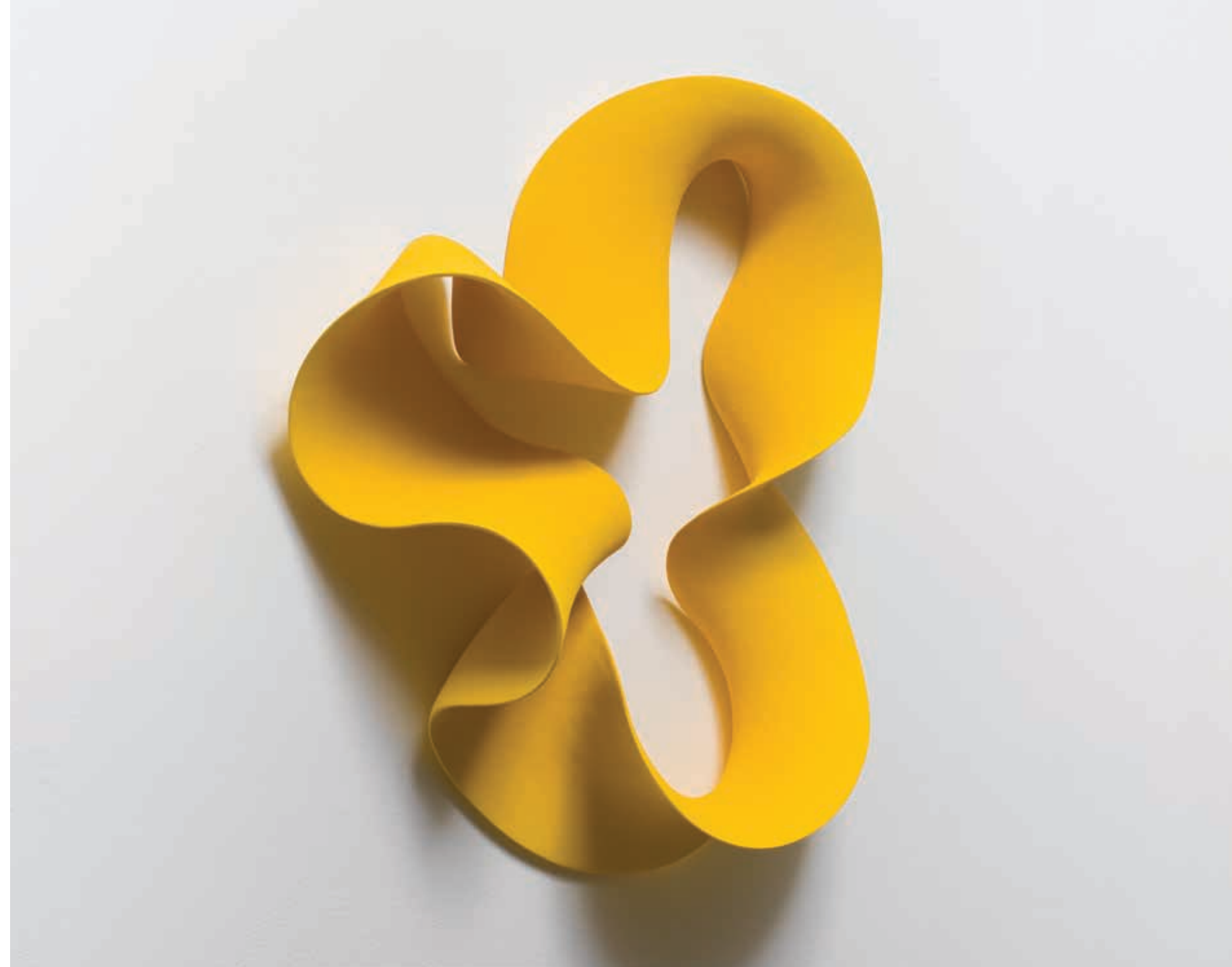




Maroon Form
2022, Ceramic with coloured slip
Unique
22 x 44 x 28 cm



Flowing Yellow (Wall piece)
2021, Ceramic with coloured slip
Unique
60 x 50 x 18 cm





Blue Progression
2022, Ceramic with coloured slip
Unique
44 x 26 x 20 cm





Quadruple Twisted Red
2020, Ceramic with coloured slip
Unique
49 x 78 x 69 cm



Fluidity (Wall piece)
2020, Ceramic with coloured slip
Unique
53 x 48 x 25 cm



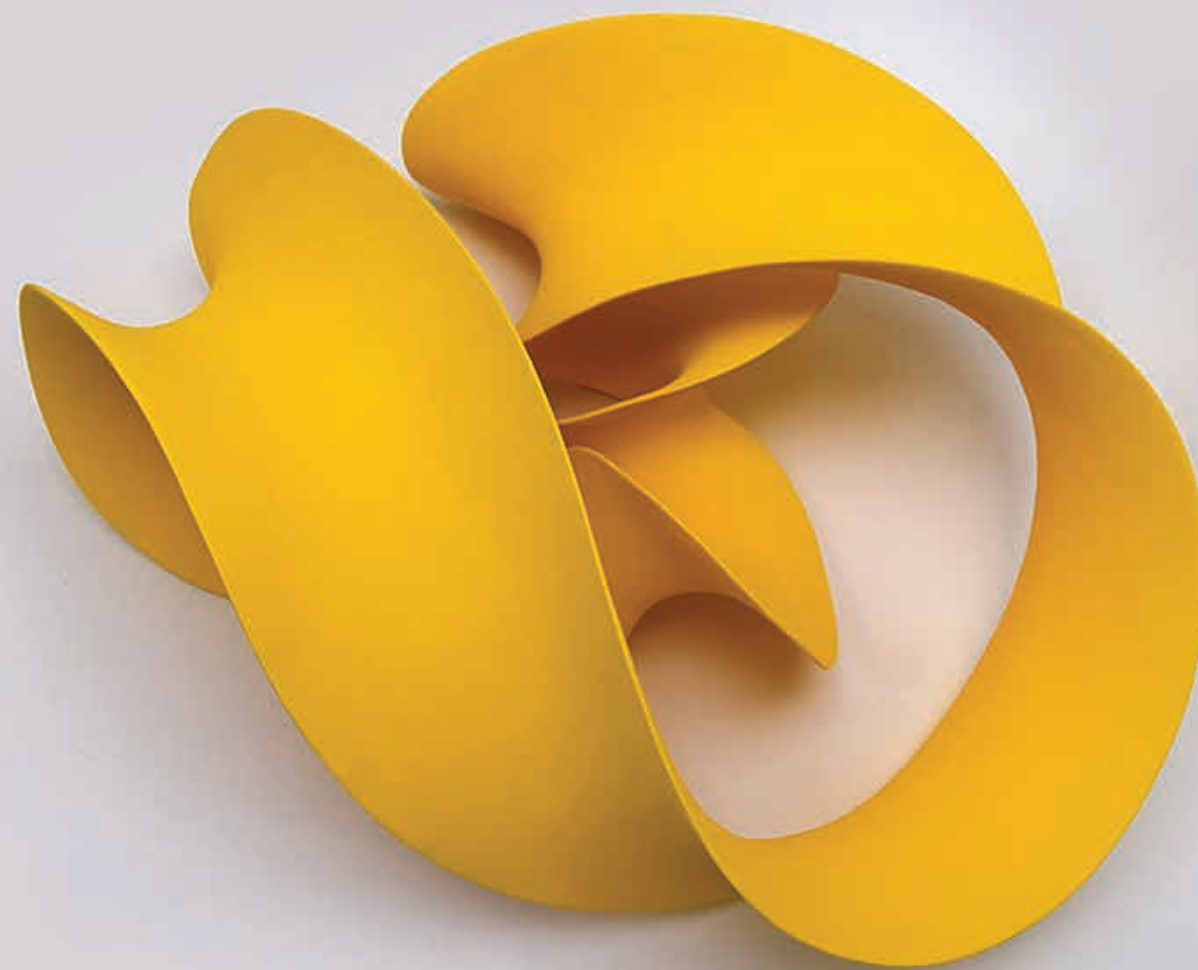
Undulating Orange
2021, Ceramic with coloured slip
Unique
30 x 48 x 51 cm

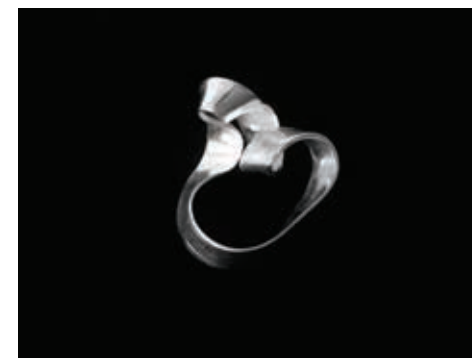




Undulation
2020, Ceramic with coloured slip
Unique
42 x 23 x 34 cm

Fluent Yellow (Wall piece)
2020, Ceramic with coloured slip
Unique
56 x 49 x 28 cm





(FAR LEFT)
Necklace 1 & 2
 2022, Sterling Silver
 Unique
 7.5 x 5 x 3 cm
 3 x 3 x 3 cm

(TOP & BOTTOM)
Rings 1 & 2
 2022, Sterling Silver
 Unique
 5 x 3 x 3 cm
 4 x 3 x 3 cm

(MIDDLE)
Earrings
 2022, Sterling Silver
 Unique
 3 x 2 cm each

MERETE RASMUSSEN

BIOGRAPHY

1974	Born in Copenhagen, Denmark
1974	Moves to Sweden with her family
1997-1999	Oestra Grevie Folkhoegskola, estetiska linjen - keramik, Sweden
2000-2005	Returns to Denmark to study Ceramics MA at Designskolen Kolding
2004	Glasgow School of Art, Student Exchange, Scotland
2004	TERRA, International Sculpture Symposium, Serbia and Montenegro
2005	Network, The International Ceramic Research Centre, Denmark
2005	Moves to Camberwell, London
2007	Awarded the Crafts Council Development Award
2008	Ceramic Symposium Tel Hai, Israel
2017	Moves to Sussex

SOLO EXHIBITIONS

2022	Merete Rasmussen: Expansion, Pangolin London
2019	Merete Rasmussen: New Work, Pangolin London
2016	J. Lohmann Gallery, New York
2015	Merete Rasmussen: Bronze and Ceramics, Pangolin London
2014	Equilibre & Couleur, Mouvements Modernes, Paris
2013	Merete Rasmussen, The Scottish Gallery, Edinburgh
	Sculptural Ceramics: Focus Artist, Sculptural Showcase, Pangolin London
2011	Sculpture in the Workspace, Public Art at Canary Wharf, London
	Merete Rasmussen, Bluecoat Display Centre, Liverpool
2010	Merete Rasmussen, The Scottish Gallery, Edinburgh
2009	15a Galerie & Beedentuin, Lochem, The Netherlands

GROUP EXHIBITIONS & FAIRS

2022	Curve and Form, Pangolin London
2021	Eye of the Collector, London
2015-22	Masterpiece Art Fair, London represented by Pangolin London

2015-18	Collective Design Fair, represented by J. Lohmann Gallery, NY
2017	Himalayan Gardens exhibition, Yorkshire, curated by Pangolin London
	Home from Home, Contemporary Applied Arts, London
2016	Summer Exhibition, Royal Academy of Arts, London
2015	Future Heritage, Decorex International Design Fair, London
2014	Sculptor's Jewellery, Pangolin London
	The Salon, Art+Design Fair, represented by J. Lohmann Gallery, NY
	Sculpture Showcase, Pangolin London
2013	Sculptural Ceramics, Pangolin London
	Puls Gallery, Brussels
	Collect 2013 - represented by Sarah Myerscough Fine Arts, London
2012	SOFA New York 2012, represented by J. Lohmann Gallery, NY
	Collect 2012, The Saatchi Gallery, London - represented by CAA
	With Love from Denmark, Puls Gallery, Brussels
2011	British Ceramics Biennial 2011, AWARD exhibition, Stoke-on-Trent
	Collect 2011, The Saatchi Gallery, London - represented by The Scottish Gallery
	SOFA New York 2011, represented by CAA
	Fables Contemporaines, Mouvements Modernes/ Dutko Gallery, Paris
2010	Puls Gallery, Brussels
	Summer Pavilion, Gallery Lilly Zeligman, Laren, The Netherlands
	Collect 2010, Saatchi Gallery, London - represented by The Scottish Gallery
	SOFA New York 2010, represented by CAA
	Contemporary Ceramics, Galerie Besson, London
	Focus, CAA, Contemporary Applied Arts, London
	Ceramic Art London 2010, Royal College of Art, London
2009	Origin, London
	Made it, Contemporary Ceramics, London Design Festival
	Ceramic Art London, Royal College of Art, UK
2008	Mouvements Modernes Gallery at FIAC, Paris
	Form and Texture, Contemporary Ceramics, London
	Origin, London
	Danish Ceramics, The Scottish Gallery, Edinburgh

2007 Paysages en Fusain, Galerie Fusion, Toulouse, France
 Sommerspiele, craft2eu, Hamburg, Germany
 Hoestsamling, Galleri Pictor, Aengelholm, Sweden
 Showcase V&A Shop, Victoria & Albert Museum, London, UK
 Hannah Peschar Sculpture Garden, Ockley, UK
 Showcase, Contemporary Ceramics, London, UK
 Esperanto, Brick, Vienna, Austria
 Showcase, The Scottish Gallery, Edinburgh, UK
 Showcase, Yorkshire Sculpture Park, UK
 Keramik i Kolding, Koldinghus, Kolding, Denmark
 Ceramic Art London 2007, London, UK

2006 Public Art at Canary Wharf, London, UK
 The Danish Museum for Arts and Crafts, Copenhagen, Denmark
 Ceramic Art London 2006, London, UK

2005 The International Ceramic Research Centre, Denmark
 Designer Zoo, Copenhagen, Denmark
 Contemporary Art Gallery, Kikinda, Serbia and Montenegro

PUBLIC COLLECTIONS

Victoria & Albert Museum, UK
 Museum of Arts and Design, New York, USA
 The Fitzwilliam Museum, Cambridge
 National Museum of Scotland, Edinburgh, UK
 Crafts Council Collection, UK
 York Art Gallery, UK
 Aberdeen Art Gallery, UK
 Oldham Gallery, Manchester, UK
 Crafts Council Collection, UK
 FNAC National Fund of Contemporary Arts, France
 TERRA, International Sculpture Symposium, Serbia and Montenegro
 Guldagergaard, The International Ceramic Research Centre, Denmark

(RIGHT)
 Merete Rasmussen in her studio



ACKNOWLEDGEMENTS

This exhibition would not have been possible without Merete's dedication in producing this spectacular exhibition of new work. We would also like to thank Pangolin Editions for realising the bronzes and silvers and Steve Russell Studios for their photography.

Printed to coincide with the exhibition:

Merete Rasmussen: Expansion

10 June - 16 July 2022

Pangolin London

Kings Place

90 York Way

London N1 9AG

T: 020 7520 1480

E: gallery@pangolinlondon.com

www.pangolinlondon.com

Designed by Pangolin London

Printed in Gill Sans

Photography by Steve Russell Studios

Printed by Healeys Print Group

ISBN: 978-1-7397803-1-9

© Pangolin London, 2022. All rights reserved