

IF YOU STOP ASKING QUESTIONS ---



The Seeker

for Ann Christopher

What's brought you here
is nothing you can see –
not this stash of relics
and rough hewn heads

strapped to axe or spear,
salvaged from the dark
fen of the sculptor's soul,
nor this drifting shadow

of a bronze blade swimming
in silent space, forged
as if from a fossilised fin,
and not the long leaning

limb of an ancient bow
whose snapped string still
tunes itself to the pitch
of a pierced hart's heart.



OUTSIDE THE EDGE
2018, Resin, Aluminium
and Stainless Steel
Unique
300 x 40 x 55 cm

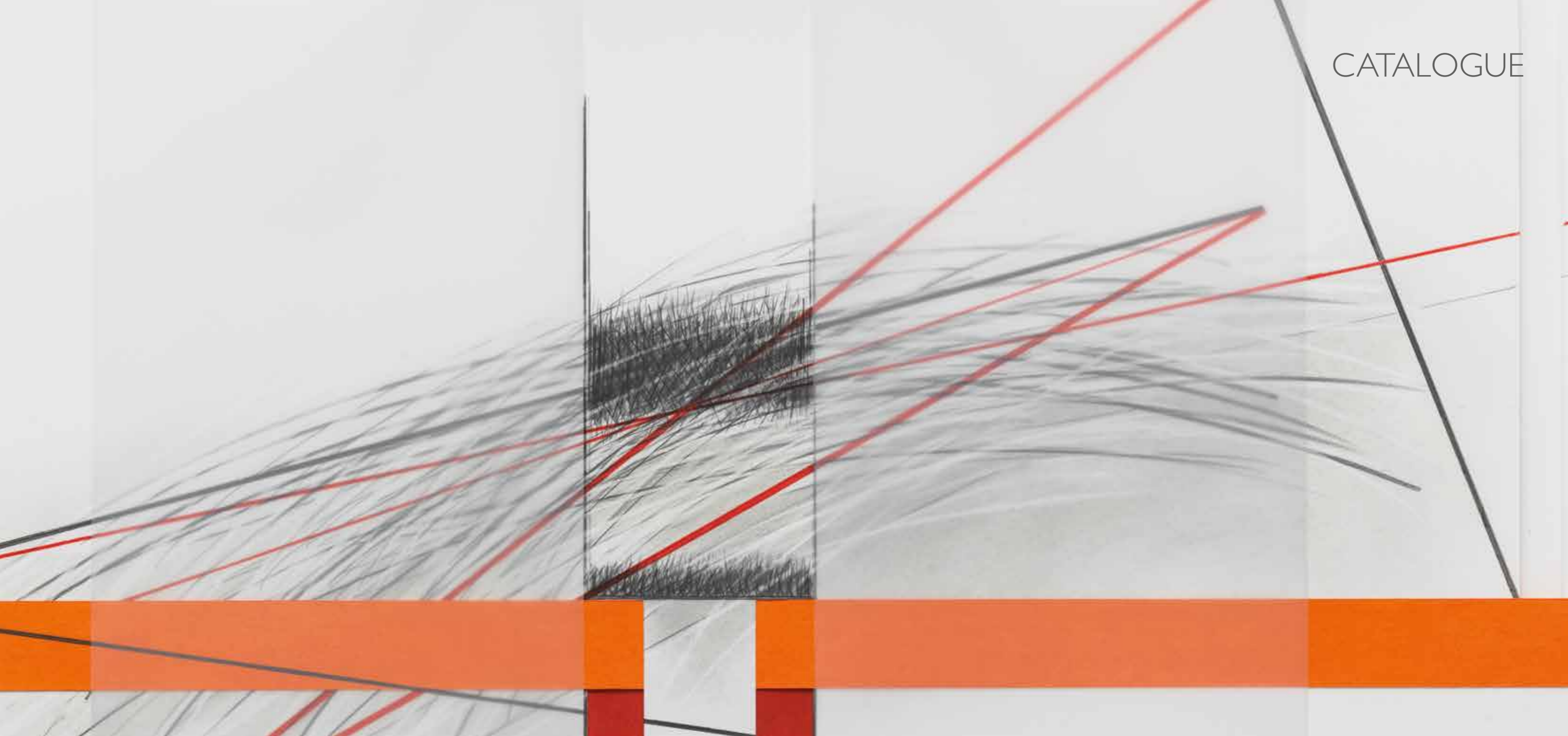
No, what you are after
is something sharper
and more raw: not
the weapon chiselled

nor the stone that sparked,
but that part of you
locked in the hunter's
hungry sights: the endless

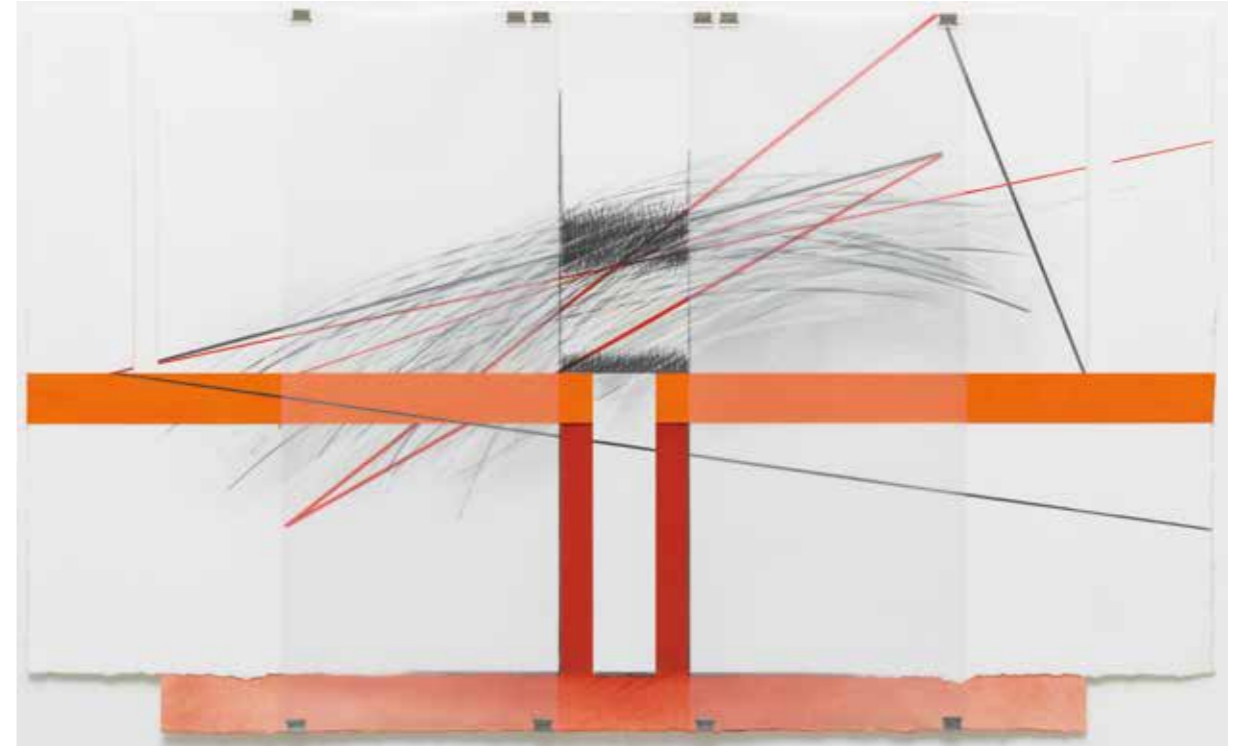
echo of self that is out there
and always will be, tilting
antlers in a tangle
of vanishing forests

or feathering the rising
ocean's floor, scales
glinting, slipping forever
the angling eyes of time.

—*Kelly Grovier*



(previous and right)
FOLLOWING LINES -8
2019, Mixed media
Unique
64.5 x 101.5 cm framed





HOLDING LINES
2019, Resin for bronze, concrete,
tyre strip and lead
Edition of 3
240 x 63 x 50 cm



SUSPENDED SHADOW
(Necklace)
2014, Sterling silver
Edition of 14
8.5 x 7 cm



HOLDING SHADOWS
(Wall hung sculpture)
2019, Bronze, leather and stainless steel
Edition of 5
28.5 x 94 x 4.5 cm
(not including hanging system)

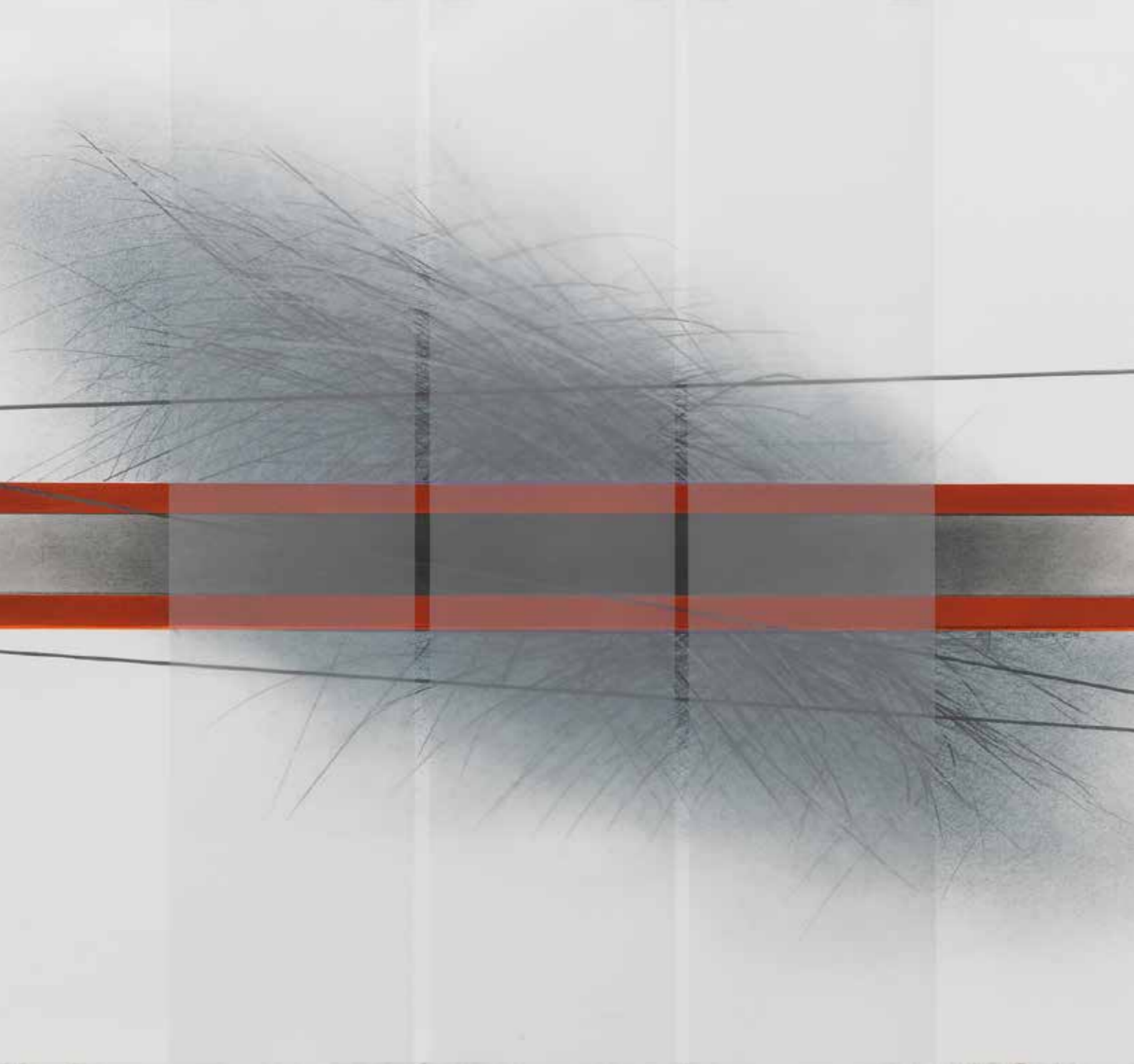




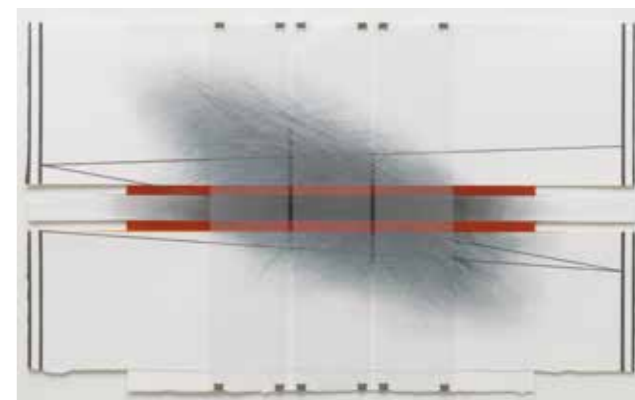
FINDING STONES -2
2019, Bronze
Edition of 5
17 x 22.5 x 1.8 cm

FINDING STONES -4
2019, Bronze
Edition of 5
11 x 21.5 x 7 cm





FOLLOWING LINES -7
2019, Mixed Media
Unique
64.5 x 101.5 cm framed



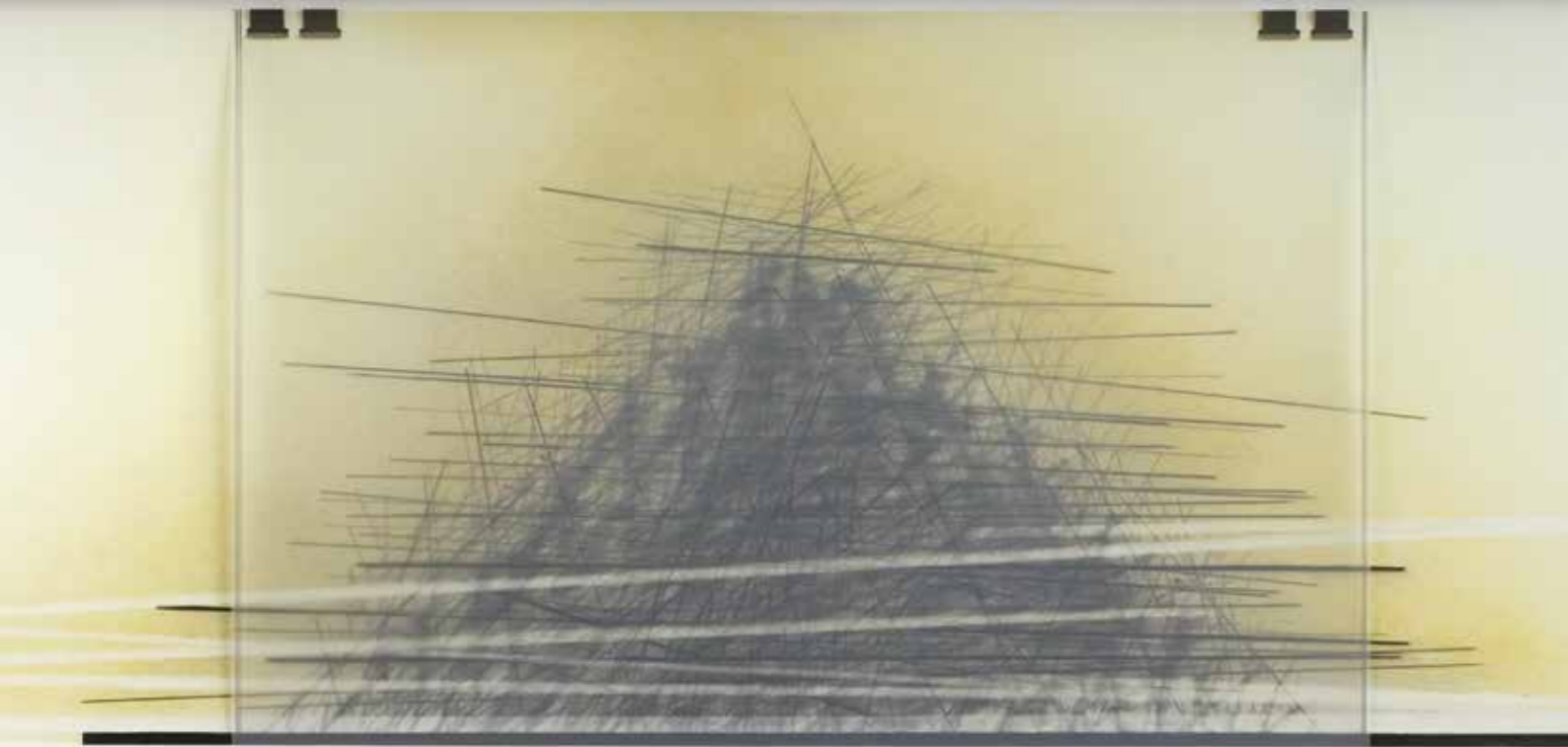
FLOATING SHADOW
2019, Sterling silver
Edition of 9
10 x 9.5 x 1.7 cm



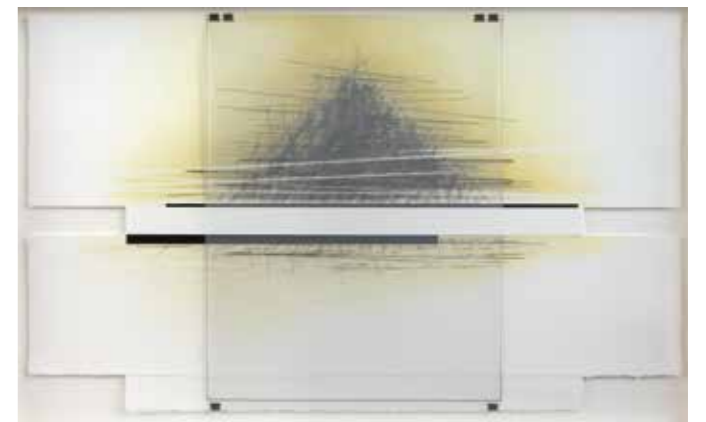


FINDING STONES - I
2019, Bronze
Edition of 5
10.5 x 39.3 x 3 cm





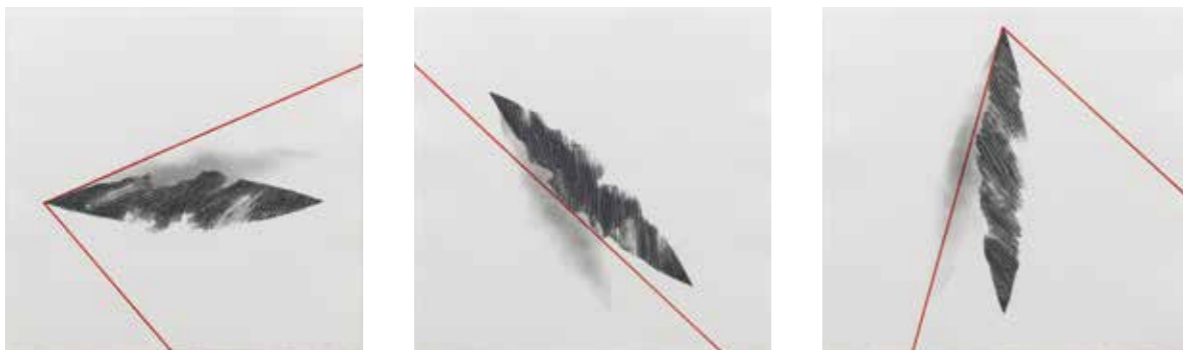
FOLLOWING LINES -2
2016, Mixed Media
Unique
64.5 x 101 cm





FINDING STONES -3
2019, Bronze
Edition of 5
10.5 x 16 x 8 cm





CHANGING SPACES 1,2,3
2018, Carborundum print hand-finished
with graphite and pen
Edition of 15
56.5 x 59 cm unframed
62.5 x 64.4 cm framed





FINDING STONES -5
2019, Bronze
Edition of 5
19 x 12 x 2.5 cm

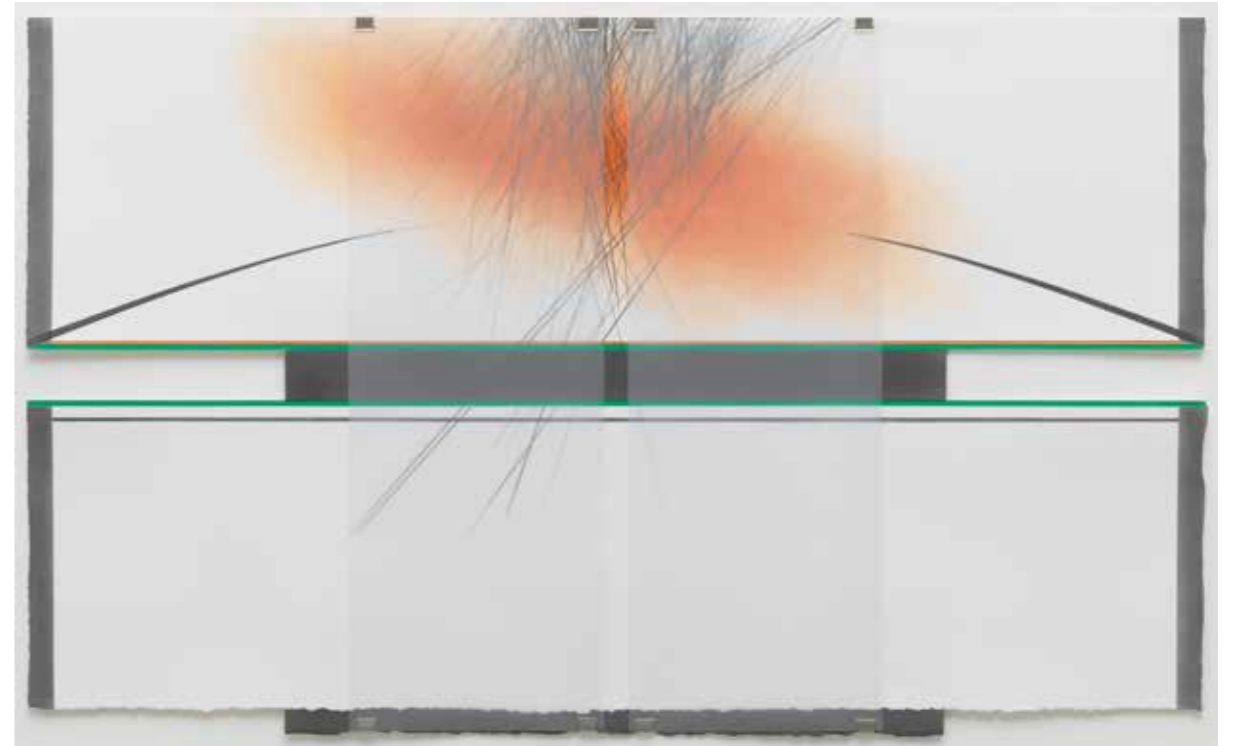




FINDING STONES -6
2019, Bronze
Edition of 5
8 x 23 x 8 cm



FOLLOWING LINES -6
2019, Mixed media
Unique
64.5 x 101.5 cm framed





FOLLOWING THE JOURNEY

2017, Resin, Aluminium and Glulam Beam with Steel
Unique

300 x 15 x 15 cm

In situ at the Royal Academy Keepers Garden

Photo: James Harris courtesy of The Royal Academy





AFTERWORD

Ann Christopher's latest exhibition aptly titled 'If you stop asking questions - - - ' explores the nature of making and what drives an artist to continue. The exhibition comprises a new body of sculpture inspired by Christopher's peripatetic wanderings around the world where she collects all sorts of natural and man-made objects that catch her eye and may at some point spark a thought or shape that could lead to a sculpture or drawing.

For this exhibition found stones collected over many years have inspired a new series of works that first began on a residency in Uganda. Elegantly pairing a beautiful found object with a shape created by Christopher to bring it to life, these remarkable works are at once intimately personal yet universally timeless. They all bear Christopher's signature elegance, powerful grace and combine sumptuous organic surfaces, often worked directly by hand in the metal, with sharp, dynamic forms.

Christopher's two-dimensional work is also highly sculptural. Using multiple layers of paper or semi-translucent film, pinched together and suspended in the frame with stationery clips, the series 'Following Lines' first came to fruition on the West Coast of Ireland whilst Christopher was on a residency there. The wide open horizons cut through with telephone lines inspired the first drawings which whilst abstract, preserve something of the landscape within them and have developed to include carefully placed flashes of colour, precision-drawn lines and texture.

Memory, ancient artefacts and contemporary architecture inspire Christopher to create instinctive sculptures that are less about working through a pre-determined series of formal decisions than a more organic and visceral aesthetic process which endeavours to retain an element of mystery -an abstract 'presence' without being directly descriptive. In Kelly Grovier's beautiful poem commissioned specifically for this exhibition, he describes Christopher as 'The Seeker' - an artist who is committed to catching the ephemeral whilst communicating the timeless and, as the exhibition title suggests, is always asking questions.

In 1980, at only 32 years old, Ann Christopher was one of the youngest sculptors to be elected to the Royal Academy. Having exhibited extensively since the late 1960s, she has become renowned for a timeless yet contemporary style that articulates both great strength and delicate sensitivity. Most recently Christopher was commissioned by the Royal Academy to create an impressive sculpture 'Following The Journey' for the Keepers House, and earlier this year Christopher had a highly successful solo exhibition in New York as well as exhibiting a selection of works at the well known Michelin restaurant Maison Bras, Laguiole, France.

Polly Bielecka, Pangolin London

ANN CHRISTOPHER

1947 Born Watford, Hertfordshire
 1965/66 Harrow School of Art
 1966/69 West of England College of Art - BA Sculpture
 1968 Harrison-Cowley Sculpture Competition - First prize
 1971 Prizewinner in Daily Telegraph Magazine, Young Sculptors Competition
 Received Peter Stuyvesant Award
 First exhibited at the Royal Academy, London
 1972 Sculpture presented to Daily Telegraph Young Writer of the Year
 1973 Received Birds Charity Award
 Commission for Bristol Literary Dinners, Publisher of the Year Award
 Arts Council Award, Thornton Bequest
 1974 Reconstructed Jacob Epstein's *Rock Drill* with Ken Cook for *Vorticism*
 exhibition at the Hayward Gallery.
 1976 South West Arts Award
 1977 Arts Council Grant
 Chantrey Bequest purchase
 1980 Elected Associate of the Royal Academy (ARA)
 1989 Elected Royal Academician (RA)
 1992 Elected Fellow of Royal Society of British Sculptors (FRBS)
 1994 Awarded RBS Silver Medal for Sculpture of Outstanding Merit
 1996 Frampton Award for sculpture in a public place
 Curated *A Sculptors Choice*, Royal Academy, London
 1997 St Cuthbert's Mill print award
 Otto Beit Medal for Sculpture of Outstanding Merit
 2005 Short listed for the Charles Woollaston Award RA
 2006 Quarter leader in *Drawing Quarters* a practise based
 Symposium, UWE, Bristol
 2011 Selector for 1st Istanbul Summer Exhibition, Istanbul, Turkey
 Shortlisted for RIBA pylon competition (Ian Ritchie architects team)
 2012 Residency at Ruwenzori Sculpture Foundation, Uganda

2012 Fellow - Ballinglen Arts Foundation, Co. Mayo, Ireland
 2015 Residency at Ruwenzori Sculpture Foundation, Uganda
 Published *Drawing Lines* a book of own photographs
 2016 Residency at Ballinglen Arts Foundation, Co. Mayo
 Royal Academy publication of monograph - *Ann Christopher*
 2017/18 Residency at Ruwenzori Sculpture Foundation, Uganda
 2018 Residency at Ballinglen Arts Foundation, Co. Mayo

SOLO EXHIBITIONS INCLUDE

2019 EDGE + LINE Rosenberg & Co, New York
 2018 CHANGING SPACES Ballinglen Arts Foundation, Ballycastle Co. Mayo
 2018 Sculpture at Maison Bras Laguiole, France
 2016/17 ALL THE CAGES HAVE OPEN DOORS Pangolin London, Kings Place
 2016 DRAWING – THE LINES OF TIME Fine Rooms, Royal Academy
 2014 MARKS ON THE EDGE OF SPACE Rabley Drawing Centre
 2013 TO KNOW WITHOUT REMEMBERING Pangolin London
 2010 MARKS ON THE EDGE OF SPACE Pangolin London, Kings Place, London
 2007/08 THE POWER OF PLACE Sir Hugh Casson Room, Royal Academy
 2004 STILL LINES Jubilee Park, Canary Wharf London
 1999 Sculpture Drawing Prints, Courcoux & Courcoux, Stockbridge
 Works on Paper, Royal West of England Academy, Bristol
 1997 Sculpture Drawing Prints, Redfern Gallery, London
 1989 *Ann Christopher 1969-89* Dorset County Museum & Art Gallery, Dorchester

COMMISSIONS INCLUDE

2017/18 THE SHAPE OF TIME 2m bronze, Ruwenzori Sculpture Foundation, Uganda
 2017 FOLLOWING THE JOURNEY 5m resin/wood, RA Keepers House Garden
 2007/8 BEYOND THE EDGE ed. of 12, 46 cm bronze sculptures, Parabola Land Ltd
 2004 IN THE SKY THERE IS NO EAST OR WEST medal, British Art Medal Society
 2002 THE EDGE OF LIGHT 2.2 m bronze for a private site nr Albi, France

2001	SHADOW LINE 48cm bronze, 'New Concepts' Cass Sculpture Foundation	Contemporary Arts Society, London
	LINES OF TIME 19 cm multiple edition in stainless steel for Wingfield Arts, Suffolk	Corcoran Legacy Collection, American University Museum, Washington DC,
2000/01	TOWARDS THE SKY 5.5 m corten sculpture at Portishead for Crest Nicholson (South West)	Glynn Vivian Art Gallery, Swansea
1999	STILL LINE 2.3 m stone and stainless steel sculpture incorporating water at St Peters Hospital, Bristol for the John Pontin Trust	Golder-Thompson Collection, Pallant House Gallery, Chichester
1998	THE SILENCE OF SHADOWS 3.3 m bronze for a private garden, Great Barrington, USA	Granville Holdings Plc, London
1997	SILENT SHADOW 2.4 m bronze sculpture for Linklaters, sited at 1 Silk St, London	Grosvenor Square Properties, London
1996	CUTTING LINE 4.8 m Corten steel sculpture at Marsh Mills, Plymouth, UK	Gruss & Co, New York, USA
1995	Two industry awards for ATE International	Harrison Weir Collection, London
	WHITE LINES glass multiple edition sculpture for the Royal Academy	Linklaters, London
1994	BEYOND SILENCE 2.3 m bronze sculpture for a private site, Washington DC, USA	Evelyn Stefansson Nef, Washington DC, USA
1993	LINE FROM WITHIN 4.6 m bronze sculpture for Royal West of England Academy, sited in Castle Park, Bristol	Prior's Court School, Newbury
1990-1	Three industry awards for ATE International	Royal Academy, London
1989	SQUARE LINE 3.2m bronze incorporating water at 224/226 Tower Bridge Road for Grosvenor Square Properties	Royal Collection, Windsor Castle
1985/87	THE LAURENCE OLIVIER AWARD for the Society of West End Theatre	Royal West of England Academy, Bristol
1973-74	Sculpture for Bristol Literary Dinners, Publisher of the Year Award	Ruwenzori Sculpture Foundation, Uganda
1972	Sculpture for presentation to Daily Telegraph Young Writer of the Year	Salisbury Art Gallery, The John Creasey Museum
		Sharjah Art Museum, UAE
		Talboys Bequest, Bristol
		Victoria Art Gallery, Bath
		World Wide Business Centres Inc, Philadelphia, USA and private collections in Europe and USA.

WORKS IN COLLECTIONS

ATE International, London
 Ballinglen Arts Foundation, Co. Mayo, Ireland
 Bristol Schools Arts Services
 Bristol University
 British Museum, London
 Cass Sculpture Foundation, Goodwood
 Chantrey Bequest, London
 City of Bristol Museum & Art Gallery

SELECTED GROUP EXHIBITIONS

2019	<i>Carl Plackman & His Circle</i> , Pangolin London <i>Parallel Lines – Drawing and Sculpture</i> , The Lightbox, Woking
2017/18	<i>The Sleeping Procession</i> , Cass Sculpture Foundation, Goodwood
2017	<i>Small is Beautiful 34th edition</i> , Flowers, Cork Street, London <i>ARK – Chester Cathedral</i> , Gallery Pangolin <i>Women of the RWA</i> Bristol
2016	<i>Dubai RCA Secret</i> <i>Made in Uganda</i> , Museum of Uganda, Kampala

2016	<i>Jubilee</i> , Gallery Pangolin Chalford <i>Lines + Colours</i> , Gustavo Bacarisas Gallery, Gibraltar <i>Contemporary Abstract Prints</i> (Golder Thompson Gift) Pallant House Gallery	2002	<i>Artfutures 2002</i> , Contemporary Art Society, London <i>Five Women Artists</i> , Redfern Gallery, London
2015	<i>Sculptors' Drawings and Prints</i> , Gallery Pangolin, Chalford <i>Dubai RCA Secret</i> <i>Sculptors Drawings – Keepers House</i> Royal Academy <i>Sculpture at St Withiel</i> Lemon St Gallery, St Withiel <i>Small is beautiful XXXII</i> Flowers, Cork St, London	2001	<i>Concept Editions</i> , Cass Sculpture Foundation, Goodwood
2014	Recent Print Acquisitions' exhibition from the Golder-Thompson Gift Pallant House Gallery, Chichester <i>Crucible -2</i> Gloucester Cathedral (Pangolin) <i>Sculptors' Jewellery</i> , Pangolin London	2000	<i>Sculpture in the Garden</i> , Bohun Gallery, Henley-on-Thames
2013	<i>Here, There and Somewhere in Between</i> , Hatfield House <i>Gifted: From the Royal Academy to The Queen</i> , Queens Gallery, Buckingham Palace <i>Small is Beautiful XXXI</i> , Flowers, Kingsland RD, London	1999	<i>The Shape of the Century</i> , City of Salisbury & then at Canary Wharf, London
2012	<i>Interesting Times</i> Leicester University Botanical Garden <i>Sculptors' Drawings + Works on Paper</i> Pangolin London + Kings Place Gallery <i>RA Now</i> , Burlington Gardens, Royal Academy	1998	<i>Small works by Academicians</i> , Royal Academy, London <i>Absolute Secret</i> , Royal College of Art at McKee Gallery, New York
2011	<i>Sculpture at The Grove</i> , Watford <i>Women Make Sculpture</i> , Pangolin London <i>The Force and Form of Memory</i> , Cyril Gerber Gallery, Glasgow <i>Driven to Draw</i> , Tennant Gallery, Royal Academy	1997	<i>Black, White and Colour</i> - works on paper by members of the Royal Academy Sharjar Art Museum UAE (toured to Abu Dhabi & Bahrain National Museum) <i>Absolute Secret</i> RCA and annually
2010	<i>Sculptors Prints and Drawings –</i> Gallery Pangolin Chalford <i>Sculpture Promenade 2010 –</i> Fitzwilliam Museum, Cambridge <i>Material Lightness</i> curated by Carol Robertson – Flowers Central, London <i>Scultura Internazionale a Racconigi 2010</i> , Racconigi, Italy	1996	Adelson Galleries inc. New York also 1997 <i>Monumental</i> , 1996 Foundation Helan-Arts, Bornem, Belgium <i>A Sculptor's Choice</i> curated by Ann Christopher - Royal Academy
2009	<i>In the Mix</i> , Pangolin London	1995	<i>Sculpture in the Garden</i> , Deans Court Wimborne Minster
2008	<i>35 years of Bohun Gallery</i> , Henley-on-Thames	1993	<i>Sculpture 93</i> , Chelsea Harbour, London
2004	<i>Ann Christopher / Paul Jenkins</i> , Redfern Gallery, London <i>Discerning Eye 2004</i> (invited by Norbert Lynton) Mall galleries, London	1992	<i>Nine Artist Members</i> , RWA, Bristol (inc AC and Elisabeth Frink) <i>Breakthrough</i> , Victoria Art Gallery, Bath
2003	<i>Sterling Stuff</i> , Sigurjon Olafsson Museum, Reykjavik, Iceland <i>Sterling Stuff</i> , Gallery Pangolin at Royal Academy	1991	<i>Avant Garden</i> , Oxford Gallery at the Barbican, London <i>Sculpture by the Spire</i> , Courcoux & Courcoux, Salisbury
2002	<i>Thinking Big: Concepts for 21st Century British Sculpture</i> , Guggenheim, Venice, Italy DACS Exhibition - CISAC 2002 World Congress, London	1990	Cyril Gerber Fine Arts, Glasgow. Les Hirondelles Gallery, Switzerland <i>Sculptors Drawings</i> , Cleveland Bridge Gallery, Bath
		1987	New Art Centre, Sloane Street London
		1986	<i>Sculpture for the Garden</i> , Harlow Carr, Harrogate
		1985	<i>Sculpture at the Park 2</i> , Cheltenham <i>Sculpture for a Garden</i> , Pallant House Gallery, Chichester
		1984	<i>New View in the Garden</i> , Oxford Gallery, Oxford
		1978	Marlborough Gallery, Marlborough.
		1975	Marjorie Parr Gallery, London <i>London Group</i> , Camden Arts Centre, London
		1974	Laurent Gallery, Geneva, Switzerland
		1971	<i>Young Sculptors</i> , Diploma Gallery, Royal Academy <i>Summer Exhibition</i> , Royal Academy, London. Work exhibited annually (except '87)
		1969	Mignon Gallery, Bath

ACKNOWLEDGMENTS

Thank you to my partner Ken Cook and the foundries, engineers and photographers for their endless patience and skill; to Kelly Grovier for his moving poem which captured so much and a special thank you to the gallery for their continued support of my work. AC

Published to coincide with the exhibition

ANN CHRISTOPHER
IFYOU STOP ASKING QUESTIONS - - -

5 November - 21 December 2019

Pangolin London
Kings Place, 90 York Way, London, N1 9AG
T: 020 7520 1480
E: gallery@pangolinlondon.com
www.pangolinlondon.com

ISBN 978-1-9993760-4-8
Printed in Gill Sans Light
Designed by Pangolin London and Ann Christopher
All photography by Steve Russell except p.38
Printed by Healey's Printers
Cover detail of HOLDING SHADOWS p.14