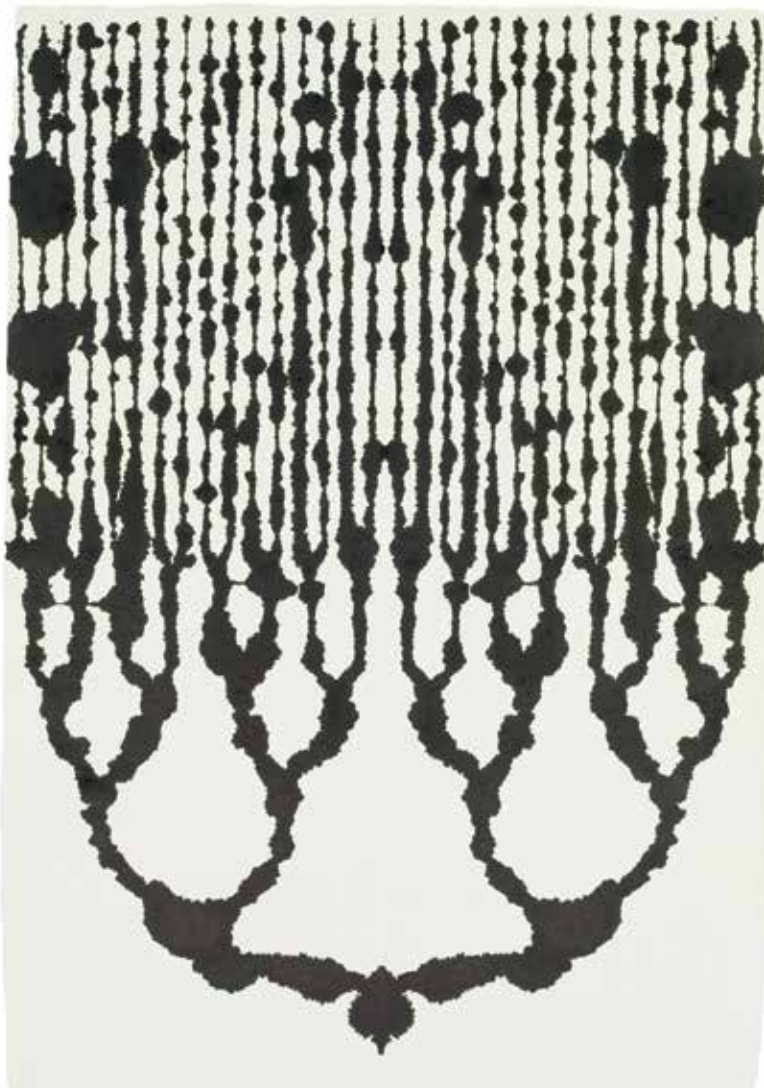


FOR IMMEDIATE RELEASE

For further information contact:
Tania Moore at Pangolin London
020 7520 1482
taniem@pangolinlondon.com

PETER RANDALL-PAGE UPSIDE DOWN & INSIDE OUT

5 September - 4 October 2014



SAP RIVER V, 2013
BLACK INK ON PAPER
UNIQUE
134 X 95 CM

Upside Down & Inside Out is an exhibition of new and recent sculpture and works on paper by Peter Randall-Page which push traditional boundaries of making. Best known for his sculpture in stone which is in public and private collections around the world, Randall-Page is also a prolific draughtsman and regularly works with other media including ceramics, print-making and casting.

PANGOLIN
LONDON

Kings Place
90 York Way
London
N1 9AG

020 7520 1480

Randall-Page has a long-standing relationship with the foundry Pangolin Editions and this show includes a series of three new monumental bronze works exploring the relationship between growth and erosion. Randall-Page carved directly into the sand moulds taken from naturally eroded granite boulders, working from the inside out. In Randall-Page's unique process, the carved indentations in the interior of the moulds become convex bulges. The uniform man-made tool used to create the indentations contrasts with the natural form of the original boulders, which is reminiscent of his earlier *Theme and Variation* series. Peter Randall-Page explains that he hopes his new works "are ambiguous and allude, by their form, to both erosion and growth."

Of his interest in growth and erosion, Randall-Page muses "*given a cast of a potato and a pebble, side by side, one would be hard pressed to distinguish between the two. Yet the processes, which produced them are diametrically opposite. The pebble a product of erosion, the potato the result of growth and expansion from within. Both seem to aspire to a minimum surface area to volume ratio but neither achieve a perfect sphere.*" Carving and casting are arguably opposite processes: one being a removal of matter and the other solidifying form from a negative space. In his new cast bronzes, Randall-Page uses the 'growth' of the casting process alongside the 'erosion' of the carving process.

The creation process is also inverted in a series of new works on paper. Images created from dripping ink down paper are turned upside down to create organic tree-like forms that seem to grow up the gallery walls. By allowing the ink to take its own path Randall-Page returns to his preoccupation with chance and randomness, theme and variation. Like nature, the artist encourages chance into regimented patterns. The resulting branching patterns allude to the structure of plants and river deltas as well as neural and vascular systems. Philip Ball who has written the essay to coincide with the exhibition notes:

"Peter's works commonly come as a series: they are multiple expressions of a single underlying idea, and only when viewed together do they give us a sense both of the fundamental generating principle and its fecund creative potential. The diversity depends on chance, on happy accidents or unplanned contingencies that allow the generative laws to unfold across rock or paper in ways quite unforeseen and unforeseeable."

Upside Down & Inside Out will be Peter Randall-Page's first show at Pangolin London since he staged the gallery's inaugural exhibition in 2008. In 2007, in collaboration with the Ruwenzori Sculpture Foundation and the London Sinfonietta, Peter Randall-Page visited the remote island of Lolui in Lake Victoria to explore the prehistoric rock gongs and the ancient rock art. The rock gong's direct connection with human evolution and the birth of music and art offered Randall-Page the inspiration to create a fresh new body of work that formed the exhibition *Rock Music Rock Art*.

This solo exhibition represents a rare chance to see works of different scales and media by an established sculptor who is widely known for his public commissions, two of which will also be unveiled in September. All artworks are available for sale, prices start at £420. A fully illustrated catalogue is available with an introductory essay by Philip Ball.

Gallery open Monday - Saturday 10am - 6pm

For further information contact:

Tania Moore at Pangolin London

020 7520 1482

taniam@pangolinlondon.com

Or

Celia Bailey at Paget Associates PR

020 7836 2703

PANGOLIN

LONDON

Kings Place
90 York Way
London
N1 9AG

020 7520 1480

IMAGE SHEET - For press information please contact Tania Moore

T: 020 7520 1482 E: taniam@pangolinlondon.com

PETER RANDALL-PAGE: UPSIDE DOWN & INSIDE OUT

5 September - 4 October 2014. Photography: Steve Russell.



PETER RANDALL-PAGE CASTING NEW
BRONZE AT PANGOLIN EDITIONS
FOUNDRY, 2014



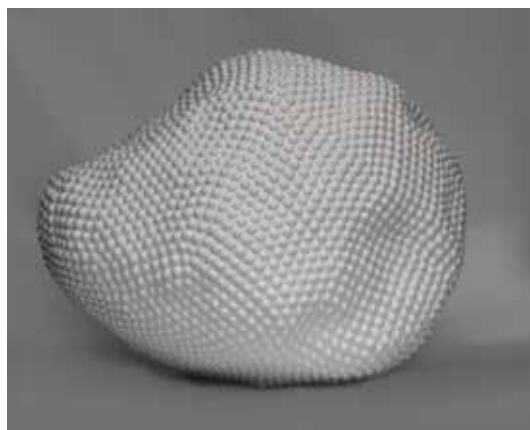
PETER RANDALL-PAGE WORKING ON
THE SAND MOULD FOR BRONZE AT
PANGOLIN EDITIONS FOUNDRY, 2014



SOURCE SEED I, 2013
BLACK INK ON PAPER
UNIQUE
300 X 340 CM



BLOOD TREE I, 2013
BURNT SIENNA INK ON PAPER
UNIQUE
198 X 255 CM



THEME AND VARIATION II, 2008
PAINTED BRONZE
EDITION OF 4
101 CM HIGH



MAQUETTE FOR SEED, 2007
BRONZE
EDITION OF 12
24 CM HIGH

PANGOLIN
LONDON

Kings Place
90 York Way
London
N1 9AG

020 7520 1480